



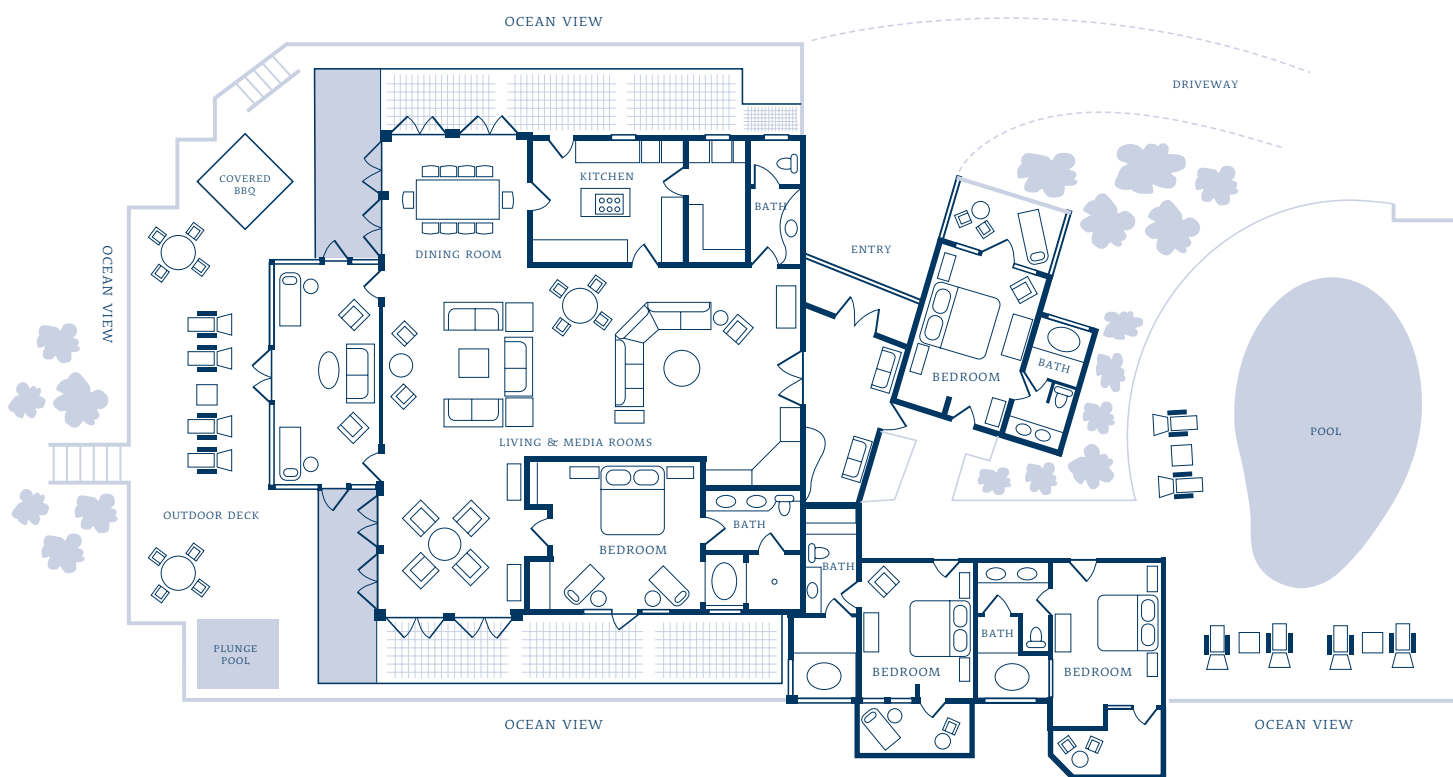
# CROW'S NEST

four bedroom villa

This private gated villa sits on its own mountain above the resort, and has panoramic views of the Sir Francis Drake channel and Virgin Islands in all directions. The Santa Barbara coastal style architecture and open floor plans ensure that each view from the villa is a spectacular one, no matter where you look. The wrap around deck is the perfect location to watch the many yachts and sail boats cruise by.

## CROW'S NEST FEATURES

- Four bedroom suites, each offering complete privacy and en-suite baths with deep two-person Jacuzzi soaking tubs and showers, secluded verandas, and separate entrances
- Villa can accommodate eight guests
- Fully appointed kitchen
- Wet bar
- 52-inch TV in living room with entertainment center
- Wi-Fi
- A personal staff including a butler, chef, housekeeper, and a private vehicle and driver for personal use
- 6,500 square-foot interior/5,200 square-foot exterior
- Convenient to the resort's main lobby, restaurant, and beach
- Seamless-edge pool and dipping pool with decks on both the north and south exposures
- Outdoor grilling area



*Crow's Nest Villa is available on an EP or FAP basis. Daily FAP rates include Breakfast, Lunch, and Dinner for up to 8 guests. Additional guests in the villa are welcome at an additional nightly charge. Please enquire with reservations. Beverages, tax, and service charge are additional.*



Views of Crow's Nest



800.346.4451 616.458.6767 FAX 616.458.6641 RESERVATIONS@PETERISLAND.NET  
PO BOX 211 ROAD TOWN, TORTOLA, BVI VG 1110